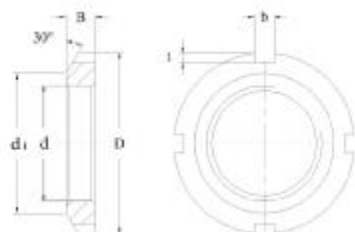


HMEC



Dimensions						Code	Corresp	Weight
d	D	d ₁	B	b	t	HMEC	Locking Washer	
mm						KM	KMA	≈
								kg
M160x3	210	182	25	16	7.0	KM32	MB32	2.590
M170x3	220	193	26	16	7.0	KM34	MB34	2.800
M180x3	230	203	27	18	8.0	KM36	MB36	3.070
M190x3	240	214	28	28	8.0	KM38	MB38	3.390
M200x3	250	226	29	18	8.0	KM40	MB40	3.690