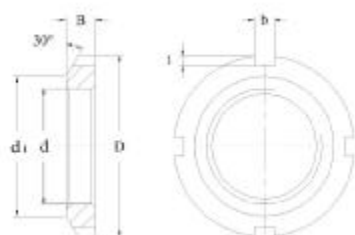


Lock nuts



Dimensions						Code		Corresp.	Weight
d	D	d ₁	B	b	t	HMEC		Locking Washer	≈ kg
mm						KM	KMA		
M10x0.75	18	13.5	4	3	2.0	KM0		MB0	0.004
M12x1	22	17	4	3	2.0	KM1		MB1	0.007
M15x1	25	21	5	4	2.0	KM2		MB2	0.010
M17x1	28	24	5	4	2.0	KM3		MB3	0.013
M20x1	32	26	6	4	2.0	KM4		MB4	0.019
M25x1.5	38	32	7	5	2.0	KM5	KMA5	MB5	0.025
M30x1.5	45	38	7	5	2.0	KM6	KMA6	MB6	0.043
M35x1.5	52	44	8	5	2.0	KM7	KMA7	MB7	0.053
M40x1.5	58	50	9	6	2.5	KM8	KMA8	MB8	0.085
M45x1.5	65	56	10	6	2.5	KM9	KMA9	MB9	0.120
M50x1.5	70	61	11	6	2.5	KM10	KMA10	MB10	0.150
M55x2	75	67	11	7	3.0	KM11	KMA11	MB11	0.160
M60x2	80	73	11	7	3.0	KM12	KMA12	MB12	0.170
M65x2	85	79	12	7	3.0	KM13	KMA13	MB13	0.200
M70 x2	92	85	12	8	3.5	KM14	KMA14	MB14	0.240
M75x2	98	90	13	8	3.5	KM15	KMA15	MB15	0.290
M80x2	105	95	15	8	3.5	KM16	KMA16	MB16	0.400
M85x2	110	102	16	8	3.5	KM17	KMA17	MB17	0.450
M90x2	120	108	16	10	4.0	KM18	KMA18	MB18	0.560
M95x2	125	113	17	10	4.0	KM19		MB19	0.660
M100x2	130	120	18	10	4.0	KM20	KMA20	MB20	0.700
M105x2	140	126	18	12	5.0	KM21	KMA21	MB21	0.840
M110x2	145	133	19	12	5.0	KM22	KMA22	MB22	0.970
M115 x2	150	137	19	12	5.0	KM23		MB23	1.010
M120 x2	155	138	20	12	5.0	KM24	KMA24	MB24	1.080
M125x2	160	148	21	12	5.0	KM25	KMA25	MB25	1.190
M130x2	165	149	21	12	6.0	KM26	KMA26	MB26	1.250
M135x2	175	160	22	14	6.0	KM27		MB27	1.550
M140x2	180	160	22	14	6.0	KM28		MB28	1.600
M150x2	195	171	24	14	6.0	KM30		MB30	2.030