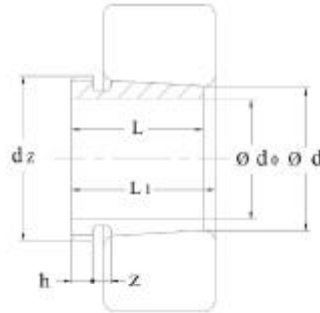


## HMEC



Dimensions							Code	Corresp	Weight
$d_0$	$d$	$d_z$	$L$	$L_1$	$h$	$z$	HMEC	Withdrawal	$\approx$
							Sleeve	Nut	kg
mm									
150	160	M180X3	124	130	20	12	<b>AH3232</b>	KM36	4.020
150	160	M180X3	140	146	24	12	<b>AH2332</b>	KM36	4.690
160	170	M180X3	85	90	17	10	<b>AH3034</b>	KM36	2.400
160	170	M190X3	104	109	16	10	<b>AH3134</b>	KM38	3.410
160	170	M190X3	134	140	24	12	<b>AH3234</b>	KM38	3.410
160	170	M190X3	146	152	24	12	<b>AH2334</b>	KM38	5.230
170	180	M190X3	92	98	17	12	<b>AH3036</b>	KM38	2.800
170	180	M200X3	116	122	19	12	<b>AH3136</b>	KM40	4.160
170	180	M200X3	105	110	17	10	<b>AH2236</b>	KM40	3.670
170	180	M200X3	140	146	24	12	<b>AH3236</b>	KM40	5.290
170	180	M200X3	154	160	26	12	<b>AH2336</b>	KM40	5.940
180	190	Tr205X4	96	102	17	12	<b>AH3038</b>	HML41T	3.280
180	190	Tr210X4	125	131	19	12	<b>AH3138</b>	HM42T	4.730
180	190	Tr210X4	112	117	18	10	<b>AH2238</b>	HM42T	4.150
180	190	Tr210X4	160	167	26	14	<b>AH2338</b>	HM42T	6.530
180	190	Tr210X4	145	152	25	14	<b>AH3238</b>	HM42T	5.800