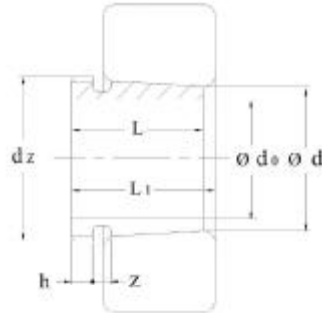


Withdrawal Sleeves



Dimensions								Code	Corresp	Weight
d_0	d	d_z	L	L_1	h	z	HMEC	Sleeve	Withdrawal Nut	≈ kg
mm										
100	110	M125	68	72	11	8	AH3122		KM25	1.280
105	110	M120X2	68	72	11	8	AH3122X		KM24	0.786
105	110	M125X2	82	86	12	8	AH3222X		KM24	1.060
105	110	M125X2	98	102	16	8	AH2322X		KM25	1.350
110	120	M140X2	75	79	12	8	AH3124		KM28	1.670
110	120	M140X2	90	94	17	8	AH2324		KM28	2.470
115	120	M130X2	60	64	13	8	AH3024X		KM26	0.737
115	120	M130X2	75	79	12	8	AH3124X		KM26	0.948
115	120	M135X2	90	94	17	8	AH3224X		KM27	1.310
115	120	M135X2	105	109	17	8	AH2324X		KM27	1.610
125	130	M140X2	67	71	14	8	AH3026X		KM28	0.907
125	130	M140X2	78	82	12	8	AH3126X		KM28	1.080
125	130	M145X2	98	102	15	8	AH3226X		KM29	1.580
125	130	M145X2	115	119	19	8	AH2326X		KM29	1.970
135	140	M150X2	68	73	14	10	AH3028X		KM30	0.996
135	140	M150X2	83	88	14	10	AH3128X		KM30	1.260
135	140	M155X3	104	109	15	10	AH3228X		KM31	1.810
135	140	M155X3	125	130	20	10	AH2328X		KM31	2.340
145	150	M160X3	72	77	15	10	AH3030X		KM32	1.120
145	150	M160X3	96	101	15	10	AH3130X		KM33	1.750
145	150	M160X3	114	119	18	10	AH3230X		KM33	2.210
145	150	M160X3	135	140	24	10	AH2330X		KM33	0.000
150	160	M170X3	77	82	16	10	AH3032		KM34	2.010
150	160	M180X3	103	108	16	10	AH3132		KM36	3.180