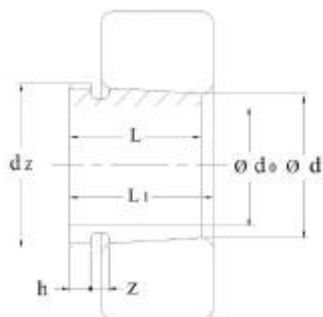


HMEC



Dimensions							Code	Corresp	Weight
d_0	d	d_2	L	L_1	h	z	HMEC	Withdrawal Nut	\approx
mm									kg
85	90	M100X2	53	57	9	7	AH318X	KM20	0.465
85	90	M100X2	63	67	10	7	AH3218X	KM20	0.578
85	90	M100X2	80	83	14	7	AH2318X	KM20	0.777
90	95	M105X2	57	61	10	8	AH319X	KM21	0.537
90	95	M105X2	85	89	15	8	AH2319X	KM21	0.888
95	100	M110X2	59	63	10	8	AH320X	KM22	0.586
95	100	M110X2	75	77	12	7	AH3220X	KM22	0.768
95	100	M110X2	90	94	15	8	AH2320	KM22	1.000