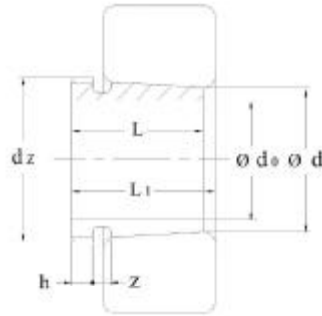


## Withdrawl Sleeves



| Dimensions |     |         |     |       |     |     | Code           | Corresp    | Weight    |
|------------|-----|---------|-----|-------|-----|-----|----------------|------------|-----------|
| $d_0$      | $d$ | $d_z$   | $L$ | $L_1$ | $h$ | $z$ | HMEC           | Withdrawal | $\approx$ |
| mm         |     |         |     |       |     |     | Sleeve         | Nut        | kg        |
| 35         | 40  | M45X1.5 | 30  | 32    | 6   | 5   | <b>AH308</b>   | KM9        | 0.093     |
| 35         | 40  | M45X1.5 | 40  | 43    | 7   | 6   | <b>AH2308</b>  | KM9        | 0.129     |
| 40         | 45  | M50X1.5 | 32  | 34    | 6   | 6   | <b>AH309</b>   | KM10       | 0.112     |
| 40         | 45  | M50X1.5 | 44  | 47    | 7   | 6   | <b>AH2309</b>  | KM10       | 0.163     |
| 45         | 50  | M55X2   | 35  | 38    | 7   | 6   | <b>AH310X</b>  | KM11       | 0.138     |
| 45         | 50  | M55X2   | 50  | 53    | 8   | 6   | <b>AH2310X</b> | KM11       | 0.236     |
| 50         | 55  | M60X2   | 37  | 40    | 7   | 6   | <b>AH311X</b>  | KM12       | 0.162     |
| 50         | 55  | M60X2   | 54  | 57    | 9   | 6   | <b>SH2311X</b> | KM12       | 0.257     |
| 55         | 60  | M65X2   | 40  | 43    | 8   | 7   | <b>AH312X</b>  | KM13       | 0.194     |
| 55         | 60  | M65X2   | 57  | 61    | 10  | 7   | <b>AH2312X</b> | KM13       | 0.299     |
| 60         | 65  | M75X2   | 42  | 45    | 8   | 7   | <b>AH313</b>   | KM15       | 0.256     |
| 60         | 65  | M75X2   | 61  | 64    | 11  | 7   | <b>AH2313</b>  | KM15       | 0.399     |
| 65         | 70  | M80X2   | 44  | 47    | 8   | 7   | <b>AH314</b>   | KM16       | 0.290     |
| 65         | 70  | M80X2   | 65  | 68    | 12  | 7   | <b>AH2314X</b> | KM16       | 0.466     |
| 70         | 75  | M85X2   | 46  | 49    | 8   | 7   | <b>AH315</b>   | KM17       | 0.326     |
| 70         | 75  | M85X2   | 69  | 72    | 12  | 7   | <b>AH2315X</b> | KM17       | 0.536     |
| 75         | 80  | M90X2   | 48  | 52    | 8   | 7   | <b>AH316</b>   | KM18       | 0.367     |
| 75         | 80  | M90X2   | 72  | 78    | 12  | 7   | <b>AH2316X</b> | KM18       | 0.602     |
| 80         | 85  | M95X2   | 52  | 56    | 9   | 7   | <b>AH317X</b>  | KM19       | 0.431     |
| 80         | 85  | M95X2   | 75  | 78    | 13  | 7   | <b>AH2317X</b> | KM19       | 0.676     |