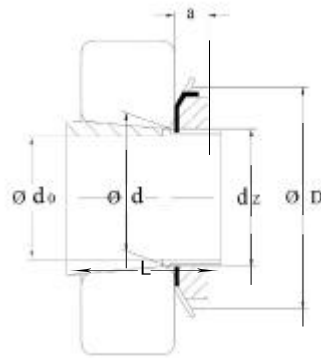


HMEC



| Dimensions | | | | | | Code | Appropriate | | Weight |
|------------|-----|--------|-----|-----|-----|-----------------------------------|-------------|---------|---------|
| d_0 | d | d_2 | D | L | a | HMEC | Nut | Locking | |
| mm | | | | | | Sleeve incl Nut and Locking | | | ≈ kg |
| 160 | 180 | M180x3 | 230 | 131 | 30 | H3136 | KM36 | MB36 | 9.500 |
| 160 | 180 | M180x3 | 230 | 161 | 30 | H2336 | KM36 | MB326 | 11.300 |
| 170 | 190 | M190x3 | 220 | 112 | 31 | H3038 | KML38 | MBL38 | 7.450 |
| 170 | 190 | M190x3 | 240 | 141 | 31 | H3138 | KM38 | MB38 | 10.800 |
| 170 | 190 | M190x3 | 240 | 169 | 31 | H2338 | KM38 | MB38 | 12.600 |
| 180 | 200 | M200x3 | 240 | 120 | 32 | H3040 | KML40 | MBL40 | 9.190 |
| 180 | 200 | M200x3 | 250 | 150 | 32 | H3140 | KM40 | MB40 | 12.100 |
| 180 | 200 | M200x3 | 250 | 176 | 32 | H2340 | KM40 | MB40 | 13.900 |