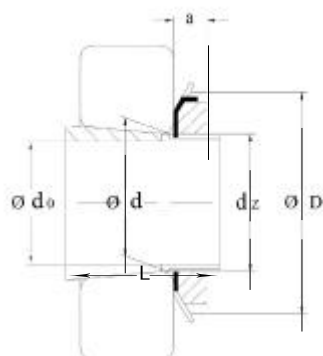


Adapter Sleeves



| Dimensions | | | | | | Code | Appropriate Components | | Weight |
|------------|-----|----------|-----|-----|-----|-----------------------------------|------------------------|---------|-----------------|
| d_0 | d | d_2 | D | L | a | HMEC | Nut | Locking | |
| mm | | | | | | Sleeve incl Nut and Locking | | | \approx kg |
| 20 | 25 | M25x1.5 | 38 | 26 | 8 | H205 | KM5 | MB5 | 0.070 |
| 20 | 25 | M25x1.5 | 38 | 29 | 8 | H305 | KM5 | MB5 | 0.075 |
| 20 | 25 | M25x1.5 | 38 | 35 | 8 | H2305 | KM5 | MB5 | 0.087 |
| 25 | 30 | M30x1.5 | 45 | 27 | 8 | H206 | KM6 | MB6 | 0.099 |
| 25 | 30 | M30x1.5 | 45 | 31 | 8 | H306 | KM6 | MB6 | 0.109 |
| 25 | 30 | M30x1.5 | 45 | 38 | 8 | H2306 | KM6 | MB6 | 0.126 |
| 30 | 35 | M35x1.5 | 52 | 29 | 9 | H207 | KM7 | MB7 | 0.125 |
| 30 | 35 | M35x1.5 | 52 | 35 | 9 | H307 | KM7 | MB7 | 0.142 |
| 30 | 35 | M35x1.5 | 52 | 43 | 9 | H2307 | KM7 | MB7 | 0.165 |
| 35 | 40 | M40x1.5 | 58 | 31 | 10 | H208 | KM8 | MB8 | 0.174 |
| 35 | 40 | M40x1.5 | 58 | 36 | 10 | H308 | KM8 | MB8 | 0.189 |
| 35 | 40 | M40 x1.5 | 58 | 46 | 10 | H2308 | KM8 | MB8 | 0.224 |
| 40 | 45 | M45x1.5 | 65 | 33 | 11 | H209 | KM9 | MB9 | 0.227 |
| 40 | 45 | M45x1.5 | 65 | 39 | 11 | H309 | KM9 | MB9 | 0.248 |
| 40 | 45 | M45x1.5 | 65 | 50 | 11 | H2309 | KM9 | MB9 | 0.280 |
| 45 | 50 | M50x1.5 | 70 | 35 | 12 | H210 | KM10 | MB10 | 0.274 |
| 45 | 50 | M50x1.5 | 70 | 42 | 12 | H310 | KM10 | MB10 | 0.303 |
| 45 | 50 | M50x1.5 | 70 | 55 | 12 | H2310 | KM10 | MB10 | 0.362 |
| 50 | 55 | M55x2 | 75 | 37 | 12 | H211 | KM11 | MB11 | 0.308 |
| 50 | 55 | M55x2 | 75 | 45 | 12 | H311 | KM11 | MB11 | 0.345 |
| 50 | 55 | M55x2 | 75 | 59 | 12 | H2311 | KM11 | MB11 | 0.420 |
| 55 | 60 | M60x2 | 80 | 38 | 13 | H212 | KM12 | MB12 | 0.346 |
| 55 | 60 | M60x2 | 80 | 47 | 13 | H312 | KM12 | MB12 | 0.394 |