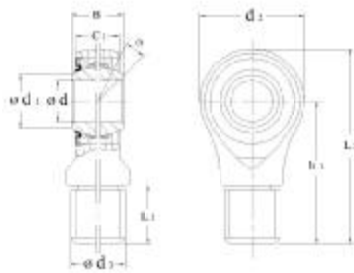


Maintenance free Rod-ends with male thread

Series **SA...C**
S ...C-2RS (sealed)



SA...C
 SA...C-2RS

Code bearing	principal dimensions						Basic load ratings					Mass	
	mm						kN						
HMEC	d	B	C _{1max}	d _{1min}	d _{2min}	d ₃	h ₁	L _{1min}	L _{2min}	Dynamic	Static	α °	≈
													≈ kg
SA6C	6	6	4.5	8	21	M6	42	21	48	3.4	8.1	13	0.013
SA8C	8	8	6.5	10	24	M8	42	21	55	5.5	12.9	15	0.026
SA10C	10	9	7.5	13	29	M10	48	26	63	8.1	17.8	12	0.044
SA12C	12	10	8.5	15	34	M12	54	28	71	10.8	24.5	10	0.066
SA15C	15	12	10.5	18	40	M14	63	34	83	17	36	8	0.121
SA17C	17	14	11.5	20	46	M16	69	36	92	21	45	10	0.172
SA20C	20	16	13.5	24	53	M20X1.5	78	43	105	30	60	9	0.283
SA25C	25	20	18	29	64	M24X2	94	53	126	48	83	7	0.504
SA30C	30	22	20	34	73	M30X2	110	65	147	62	110	6	0.835
SA35C-2RS	35	25	22	39	82	M36X3	140	82	182	80	148	6	1.41
SA40C-2RS	40	28	24	45	92	M39X3	150	86	198	100	180	7	1.86
SA45C-2RS	45	32	28	50	102	M42X3	163	92	217	127	240	7	2.57
SA50C-2RS	50	35	31	55	112	M45X3	185	104	246	156	290	6	3.58