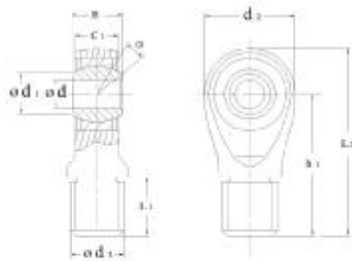
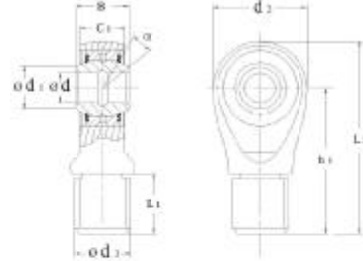


Rod-ends with mal thread

Series **SA...E / ES**
SA...ES-2RS (sealed)



SA...E / ES



SA...ES-2RS

Code bearing	principal dimensions										Basic load ratings			Mass
	mm										kN			
HMEC	d	B	C _{1max}	d _{1min}	d _{2min}	d ₃	h ₁	L _{1min}	L _{2min}	Dyn.	Sta.	α°	≈	
SA5E	5	6	4.5	7	21	M5	36	16	48	3.4	8.1	13	0.011	
SA6E	6	6	4.5	8	21	M6	36	16	48	3.4	8.1	13	0.013	
SA8E	8	8	6.5	10	24	M8	42	21	55	5.5	12.9	15	0.026	
SA10E	10	9	7.5	13	29	M10	48	26	63	8.1	17.8	12	0.044	
SA12E	12	10	8.5	15	34	M12	54	28	71	10.8	24.5	10	0.066	
SA15ES SA15ES-2RS	15	12	10.5	18	40	M14	63	34	83	17	36	8	0.121	
SA17ES SA17ES-2RS	17	14	11.5	20	46	M16	69	36	92	21	45	10	0.172	
SA20ES SA20ES-2RS	20	16	13.5	24	53	M20X1.5	78	43	105	30	60	9	0.283	
SA25ES SA25ES-2RS	25	20	18	29	64	M24X2	94	53	126	48	83	7	0.504	
SA30ES SA30ES-2RS	30	22	20	34	73	M30X2	110	65	147	62	110	6	0.835	
SA35ES SA35ES-2RS	35	25	22	39	82	M36X3	140	82	182	80	148	6	1.41	
SA40ES SA40ES-2RS	40	28	24	45	92	M39X3	150	86	198	100	180	7	1.86	
SA45ES SA45ES-2RS	45	32	28	50	102	M42X3	163	92	217	127	240	7	2.57	
SA50ES SA50ES-2RS	50	35	31	55	112	M45X3	185	104	246	156	290	6	3.58	