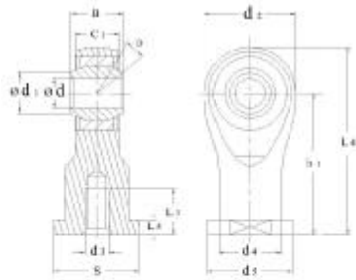


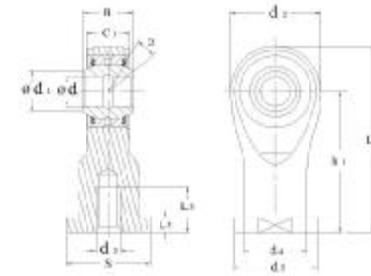
Rod-ends with female thread

Series **SI...E / ES**
SI...ES-2RS (sealed)

HMEC



SI...E / ES



SI...ES-2RS

principal dimensions
mm

d	B	c1	d1	d2	d3	h ₁	L _{3_min}	L _{4_max}	L _{5_max}	D _{4_max}	D _{5_max}	S
5	6	4.5	7	21	M5	30	11	42	5	10	13	10
6	6	4.5	8	21	M6	30	11	42	5	11	13	11
8	8	6.5	10	24	M8	36	15	49	5	13	16	13
10	9	7.5	13	29	M10	43	15	58	6.5	16	19	16
12	10	8.5	15	34	M12	50	18	67	7	18	22	18
15	12	10.5	18	40	M14	61	21	81	8	21	26	21
17	14	11.5	20	46	M16	67	24	90	10	24	29	24
20	16	13.5	24	53	M20x1.5	77	30	104	10	28	34	30
25	20	18	29	64	M24x2	94	36	126	12	35	42	36
30	22	20	34	73	M30x2	110	45	147	15	42	50	46
35	25	22	39	82	M36x3	125	60	167	15	48	58	55
40	28	24	45	92	M39x3	142	65	190	18	52	65	60
45	32	28	50	102	M42x3	145	65	199	20	58	70	65
50	35	31	55	112	M45x3	160	68	221	20	62	75	70

Code bearing	Basic load ratings			Mass	
	Dynamic kN	Static kN	α°	≈ kg	
HMEC			≈		
SI5E	3.4	8.1	13	0.016	
SI6E	3.4	8.1	13	0.017	
SI8E	5.5	12.9	15	0.035	
SI10E	8.1	17.8	12	0.061	
SI12E	10.8	24.5	10	0.096	
SI15ES	SI15ES-2RS	17	36	8	0.162
SI17ES	SI17ES-2RS	21	45	10	0.233
SI20ES	SI20ES-2RS	30	60	9	0.324
SI25ES	SI25ES-2RS	48	83	7	0.625
SI30ES	SI30ES-2RS	62	110	6	0.976
SI35ES	SI35ES-2RS	80	148	6	1.52
SI40ES	SI40ES-2RS	100	180	7	2.06
SI45ES	SI45ES-2RS	127	240	7	2.72
SI50ES	SI50ES-2RS	156	290	6	3.57