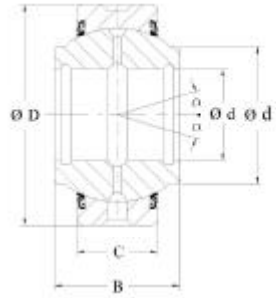


**Steel-on-steel Spherical plain bearings
with extended inner ring
Series GEEM-2RS**



GEEM...ES-2RS

Code bearing	Principal dimensions				Basic load ratings			α° \approx	Mass \approx kg
	d	D	B	C	d _{1min}	dyn	stat		
HMEC	mm								
GEEM20ES-2RS	20	35	24	12	24	30	146	6	0.073
GEEM25ES-2RS	25	42	29	16	29	48	240	4	0.13
GEEM30ES-2RS	30	47	30	18	34	62	310	4	0.17
GEEM35ES-2RS	35	55	35	20	40	80	400	4	0.25
GEEM40ES-2RS	40	62	38	22	45	100	500	4	0.35
GEEM45ES-2RS	45	68	40	25	52	127	640	4	0.49
GEEM50ES-2RS	50	75	43	28	57	156	780	4	0.60
GEEM60ES-2RS	60	90	54	36	68	245	1220	3	1.15
GEEM70ES-2RS	70	105	65	40	78	315	1560	4	1.65
GEEM80ES-2RS	80	120	74	45	90	400	2000	4	2.50