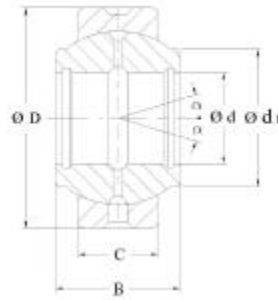
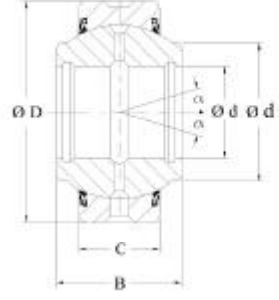


## HMEC



GEEW...ES



GEEW...ES-2RS

Code bearing	Principal dimensions				Basic load ratings			$\alpha$	Mass
	d	D	B	C	d <sub>1min</sub>	dyn	stat		
HMEC	mm							≈	≈
									kg
GEEW12ES GEEW12ES-2RS	12	22	12	7	15.5	10	54	4	0.022
GEEW15ES GEEW15ES-2RS	15	26	15	9	18.5	17	85	5	0.031
GEEW16ES GEEW16ES-2RS	16	28	16	9	20	17	85	4	0.035
GEEW17ES GEEW17ES-2RS	17	30	17	10	21	21	106	7	0.044
GEEW20ES GEEW20ES-2RS	20	35	20	12	25	30	146	4	0.071
GEEW25ES GEEW25ES-2RS	25	42	25	16	30.5	48	240	4	0.131
GEEW30ES GEEW30ES-2RS	30	47	30	18	34	62	310	4	0.168
GEEW32ES GEEW32ES-2RS	32	52	32	18	37	62	310	4	0.182
GEEW35ES GEEW35ES-2RS	35	55	35	20	40	80	400	4	0.253
GEEW40ES GEEW40ES-2RS	40	62	40	22	46	100	500	4	0.338
GEEW45ES GEEW45ES-2RS	45	68	45	25	52	127	640	4	0.481
GEEW50ES GEEW50ES-2RS	50	75	50	28	57	156	780	4	0.558
GEEW60ES GEEW60ES-2RS	60	90	60	36	68	245	1220	3	1.15
GEEW63ES GEEW63ES-2RS	63	95	63	36	71.5	245	1220	4	1.23
GEEW70ES GEEW70ES-2RS	70	105	70	40	78	315	1560	4	1.71
GEEW80ES GEEW80ES-2RS	80	120	80	45	91	400	2000	4	2.39
GEEW100ES GEEW100ES-2RS	100	150	100	55	113	610	3050	4	4.80
GEEW125ES GEEW125ES-2RS	125	180	125	70	138	950	4750	4	8.50