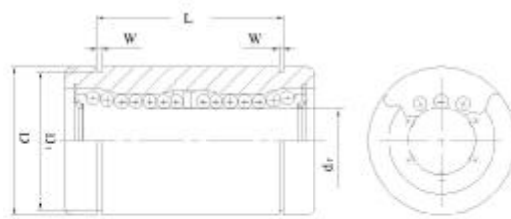


## HMEC



LME...LUU

Code bearing HMEC	Rows of Ball	Inner Diameter		Main dimensions					W	D1	Weight g ≈	Basic Nominal Load		
		dr	Tolerance	Outer Diameter D	Outer Diameter L	B	Tolerance	Tolerance				Tolerance	Naminal Dynamic Load C(N)	Naminal Static Load C0(N)
		mm	um	um	um	um	um	um						
<b>LME8LUU</b>	4	8	+9~-1	16	0~-9	45	0~-0.3	33	0~-0.3	1.1	15.2	31	430	780
<b>LME12LUU</b>	4	12	+9~-1	22	0~-11	57	0~-0.3	45.8	0~-0.3	1.3	21	80	650	1200
<b>LME16LUU</b>	5	16	+11~-1	26	0~-11	70	0~-0.3	49.8	0~-0.3	1.3	24.9	145	1230	2350
<b>LME20LUU</b>	5	20	+11~-1	32	0~-13	80	0~-0.3	61	0~-0.3	1.6	30.3	180	1400	2750
<b>LME25LUU</b>	6	25	+13~-2	40	0~-13	112	0~-0.4	82	0~-0.4	1.85	38	440	1560	3140
<b>LME30LUU</b>	6	30	+13~-1	47	0~-13	123	0~-0.4	104.2	0~-0.4	1.85	44.5	580	2490	5490
<b>LME40LUU</b>	6	40	+16~-4	62	0~-15	154	0~-0.4	121.2	0~-0.4	2.15	59	1170	3430	8040
<b>LME50LUU</b>	6	50	+16~-4	75	0~-15	192	0~-0.4	155.2	0~-0.4	2.65	72	3100	6080	15900
<b>LME60LUU</b>	6	60	+16~-4	90	0~-20	211	0~-0.4	170	0~-0.4	3.15	86.5	3500	7650	20000