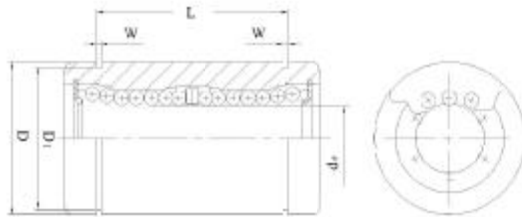


Linear Motion Ball Bearing (Long Type)

Series LM...LUU



LM...LUU

Code bearing HMEC	Rows of Ball	Inner Diameter	Main dimensions					B	W	D1	Weight g	Basic Nominal Load		
			Outer Diameter D	Outer Diameter L	Tolerance	Tolerance	Tolerance					Nominal Dynamic Load C(N)	Nominal Static Load C0(N)	
		dr	Tolerance	Tolerance	Tolerance	Tolerance			≈					
		mm	um	um	um	um								
LM6LUU	4	6	0~-10	12	0~-13	35	0~-0.3	27	0~-0.3	1.1	11.5	16	320	520
LM8LUU	4	8	0~-10	15	0~-13	45	0~-0.3	35	0~-0.3	1.1	14.3	31	430	780
LM10LUU	4	10	0~-10	19	0~-16	55	0~-0.3	44	0~-0.3	1.3	18	62	580	1100
LM12LUU	4	12	0~-10	21	0~-16	57	0~-0.3	46	0~-0.3	1.3	20	80	650	1200
LM13LUU	4	13	0~-10	23	0~-16	61	0~-0.3	46	0~-0.3	1.3	22	90	810	1570
LM16LUU	5	16	0~-10	28	0~-16	70	0~-0.3	53	0~-0.3	1.6	27	145	1230	2350
LM20LUU	5	20	0~-12	32	0~-19	80	0~-0.3	61	0~-0.3	1.6	30.5	180	1400	2750
LM25LUU	6	25	0~-12	40	0~-19	112	0~-0.4	82	0~-0.4	1.85	38	440	1560	3140
LM30LUU	6	30	0~-12	45	0~-19	123	0~-0.4	89	0~-0.4	1.85	43	580	2490	5490
LM35LUU	6	35	0~-15	52	0~-22	135	0~-0.4	99	0~-0.3	2.1	49	795	2650	6470
LM40LUU	6	40	0~-15	60	0~-22	154	0~-0.4	121	0~-0.3	2.1	57	1170	3430	8040
LM50LUU	6	50	0~-15	80	0~-22	192	0~-0.4	148	0~-0.3	2.6	76.5	3100	6080	15900
LM60LUU	6	60	0~-20	90	0~-25	211	0~-0.4	170	0~-0.3	3.15	86.5	3500	7650	20000