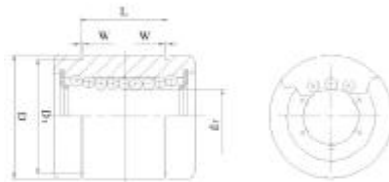


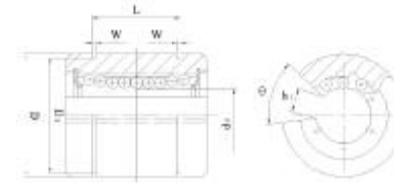
Linear Motion Ball Bearing

Series LM...UU
LM...AJ
LM...OP

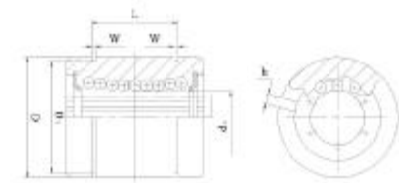
HMEC



LM...UU



LM...AJ



LM...OP

Code bearing		Major dimensions and tolerance					
HMEC				dr	Tolerance		
LM...UU	Ball circuit	Weight g	LM...AJ	LM...OP	mm	Precision J	Precision P
LM4UU	4	1.9	---	---	4	0~-5	0~-8
LM5UU	4	4	---	---	5	0~-5	0~-8
LM6UU	4	7.6	LM 6-AJ	---	6	0~-6	0~-9
LM8SUU	4	10.4	LM 8-AJ	---	8	0~-6	0~-9
LM8UU	4	15	LM 8-AJ	---	8	0~-6	0~-9
LM10UU	4	29.5	LM 10-AJ	LM 10-OP	10	0~-6	0~-9
LM12UU	4	31.5	LM 12-AJ	LM 12-OP	12	0~-6	0~-9
LM13UU	4	43	LM 13-AJ	LM 13-OP	13	0~-6	0~-9
LM16UU	5	69	LM 16-AJ	LM 16-OP	16	0~-6	0~-9
LM20UU	5	87	LM 20-AJ	LM 20-OP	20	0~-7	0~-10
LM25UU	5	220	LM 25-AJ	LM 25-OP	25	0~-7	0~-10
LM30UU	6	250	LM 30-AJ	LM 30-OP	30	0~-7	0~-10
LM35UU	6	390	LM 35-AJ	LM 35-OP	35	0~-8	0~-12
LM40UU	6	585	LM 40-AJ	LM 40-OP	40	0~-8	0~-12
LM50UU	6	1580	LM 50-AJ	LM 50-OP	50	0~-8	0~-12
LM60UU	6	1860	LM 60-AJ	LM 60-OP	60	0~-9	0~-15
LM80UU	6	4420	LM 80-AJ	LM 80-OP	80	0~-9	0~-15

Major dimensions and tolerance										Um _{max}		Load ratings		
D	tolerance	L	tolerance	B	tolerance	W	D1	h	h ₁	θ	J	P	dyn. C	stat. Co
mm										mm				
8	0~-9	12	0~-120	---	---	---	---	---	---	---	8	12	88	127
10	0~-9	15	0~-120	10.2	---	1.1	9.6	---	---	---	8	12	167	206
12	0~-11	19	0~-200	13.5	0~-200	1.1	11.5	1	---	---	8	12	206	265
15	0~-11	17	0~-200	11.5	0~-200	1.1	14.3	1	---	---	8	12	176	216
15	0~-11	24	0~-200	17.5	0~-200	1.1	14.3	1	---	---	8	12	274	392
19	0~-13	29	0~-200	22	0~-200	1.3	18	1	6.8	80°	8	12	372	549
21	0~-13	30	0~-200	23	0~-200	1.3	20	1.5	8	80°	8	12	510	784
23	0~-13	32	0~-200	23	0~-200	1.3	22	1.5	9	80°	8	12	510	784
28	0~-13	37	0~-200	26.5	0~-200	1.6	27	1.5	11	80°	10	15	774	1180
32	0~-16	42	0~-200	30.5	0~-200	1.6	30.5	1.5	11	60°	10	15	882	1370
40	0~-16	59	0~-300	41	0~-300	1.85	38	2	12	60°	12	20	980	1570
45	0~-16	64	0~-300	44.5	0~-300	1.82	43	2.5	15	50°	12	20	1570	2740
52	0~-19	70	0~-300	49.5	0~-300	2.1	49	2.5	17	50°	12	20	1670	3140
60	0~-19	80	0~-300	60.5	0~-300	2.1	57	3	20	50°	12	20	2160	4020
80	0~-19	100	0~-300	74	0~-300	2.6	76.5	3	25	50°	12	20	3820	7940
90	0~-22	110	0~-300	85	0~-300	3.15	86.5	3	30	50°	17	25	4700	10000
120	0~-22	140	0~-400	105.5	0~-400	4.15	116	3	40	50°	17	25	7350	16000