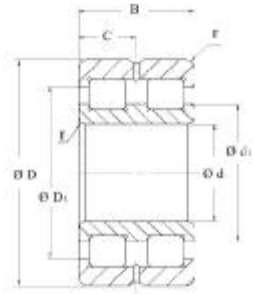
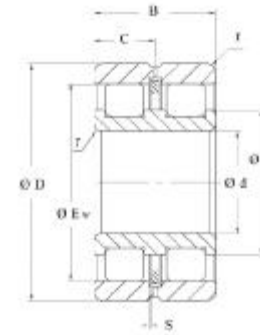


**Cylindrical roller bearings
full complement, double row
Semi-locating bearings
series SL 1850
Locating bearings
series SL 0148, SL 0149
Non-locating bearings
series SL 0248
SL 0249**



SL 0148, SL 0149 (locating bearings)

Shaft diameter	Dimensions					Mounting dimensions				Load rating	
	d	D	B	r	s	C	d ₁	D ₁	E _w	dyn. C	stat. Co
	mm									kN	
200	200	280	80	2.1	5	40	231	-	259	690	1480
220	220	270	50	1.5	-	25	241	250.5	-	340	870
	220	270	50	1.5	4	25	241	-	256	340	870
	220	300	80	2.1	-	40	248	268.5	-	720	1590
240	220	300	80	2.1	5	40	248	-	276	720	1590
	240	300	60	2	-	30	261	275	-	520	1290
	240	300	60	2	4	30	261	-	281	520	1290
	240	320	80	2.1	-	40	271	291	-	750	1740
260	240	320	80	2.1	5	40	271	-	299	750	1740
	260	320	60	2	-	30	283.5	297	-	540	1400
	260	320	60	2	4	30	283.5	-	304	540	1400
	260	360	100	2.1	-	50	295	321	-	1120	2500
280	260	360	100	2.1	6	50	295	-	331	1120	2500
	280	350	69	2	-	34.5	308	326	-	710	1860
	280	350	69	2	4	34.5	308	-	332	710	1860
	280	380	100	2.1	-	50	317	343	-	1170	2700
300	280	380	100	2.1	6	50	317	-	353	1170	2700
	300	380	80	2.1	-	40	329	349	-	830	2120
	300	380	80	2.1	6	40	329	-	356	830	2120
	300	420	118	3	-	59	341.5	374	-	1650	3800
320	300	420	118	3	6	59	341.5	-	385	1650	3800
	320	400	80	2.1	-	40	352	372	-	860	2280
	320	400	80	2.1	6	40	352	-	379	860	2280
	320	440	118	3	-	59	368	400	-	1720	4100
340	320	440	118	3	6	59	368	-	412	1720	4100
	340	420	80	2.1	-	40	369	389	-	880	2390
	340	420	80	2.1	6	40	369	-	396	880	2390
	340	460	118	3	-	59	386	418	-	1770	4300
340	460	118	3	6	59	386	-	430	1770	4300	



SL 0248, SL 0249 (non-locating bearings)

Fatigue limit load	Limiting speed	Reference speed	Code bearing HMEC			Mass
			semi-locating bearings	locating bearings	non-locating bearings	
				locating bearings	non-locating bearings	
Pu	n _G	n _B			≈	
kN	min ⁻¹	min ⁻¹			kg	
142	1400	850	-	-	SL02 4940	15.3
85	1300	850	-	SL01 4844	-	6.4
85	1300	850	-	-	SL02 4844	6.2
150	1200	750	-	SL01 4944	-	17.2
150	1200	750	-	-	SL02 4944	16.7
120	1200	750	-	SL01 4848	-	10
120	1200	750	-	-	SL02 4848	9.9
160	1200	700	-	SL01 4948	-	18.5
160	1200	700	-	-	SL02 4948	17.9
128	1100	700	-	SL01 4852	-	11
128	1100	700	-	-	SL02 4852	10.6
221	1000	600	-	SL01 4952	-	32
221	1000	600	-	-	SL02 4952	31.2
163	1000	600	-	SL01 4856	-	16
163	1000	600	-	-	SL02 4856	15.6
233	1000	550	-	SL01 4956	-	34
233	1000	550	-	-	SL02 4956	33.1
185	950	550	-	SL01 4860	-	23
185	950	550	-	-	SL02 4860	22
315	900	460	-	SL01 4960	-	53
315	900	460	-	-	SL02 4960	51.9
194	900	500	-	SL01 4864	-	24
194	900	500	-	-	SL02 4864	23.5
335	850	410	-	SL01 4964	-	56
335	850	410	-	-	SL02 4964	54.9
201	850	480	-	SL01 4868	-	25.5
201	850	480	-	-	SL02 4868	25
350	800	390	-	SL01 4968	-	59
350	800	390	-	-	SL02 4968	57.8